

SmarTurbo | Turbo Blower



Qingdao SmarTurbo Blower Co., Ltd

www.SmarTurbo.com.cn



About SmarTurbo

SmarTurbo is a group company focused on R&D, manufacturing and sales of high speed turbo blower and turbo compressor. We have built the most comprehensive research and development system of high speed permanent-magnet synchronous motor, air bearing and magnetic bearing and aerodynamics for mass-production of turbo blower and turbo compressor.

SmarTurbo has mastered high speed motor manufacturing technology of integrated rotor magnetization and detection, magnet assembly and high speed dynamic balance. We own world-leading automation equipment for coil wiring, coil expanding and insulation wrapping. We are equipped with CNC boring and milling machining center, 5-axis machining center and CNC grinding machine.

SmarTurbo has professional air bearing and magnetic bearing design and production team. Air bearing and magnetic bearing designed for complex operating conditions of high speed, extreme temperature, large loading, strong vibration and special lubricating medium is achieved in our own laboratory. Air bearing and magnetic bearing performance of load capacity, rigidity and damping coefficients can be precisely predicted by the self-developed simulation software.

SmarTurbo has followed standard product testing process for each set of oil-free high speed centrifugal turbo blower and turbo compressor, which includes aerodynamic performance test, vibration test, temperature rise test, noise test and so on.

SmarTurbo has the most comprehensive environmental laboratories, including noise laboratory, shock & vibration laboratory, high & low temperature laboratory, salt spray laboratory, etc. our laboratories meet the environmental test requirements of turbo blower and turbo compressor, which further verify the product performance and ensure manufacture quality in a multi-layer way.

Adhering to the strategic goal of “Leading Turbo Blower Development and Saving Your Electricity Bill”, SmarTurbo will keep investing in turbo blower and turbo compressor to better service our partner.

➔ SmarTurbo Factory



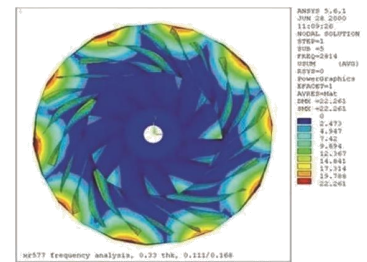
➔ SmarTurbo R&D Center



Laboratory



material analysis



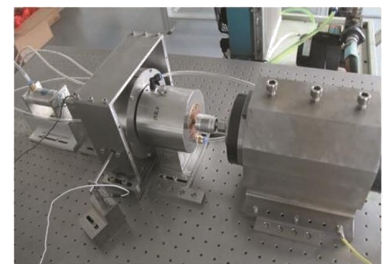
three-dimensional flow design



three-coordinates measuring



3D Contour Measuring

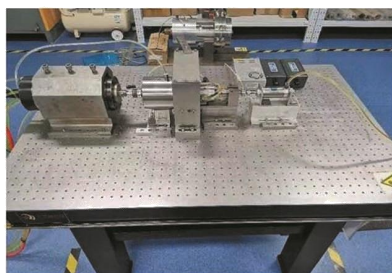


high temperature measuring

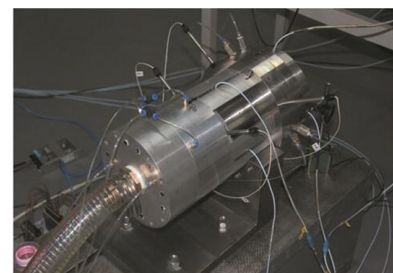
➔ SmarTurbo Test Center



dynamic balancing bench



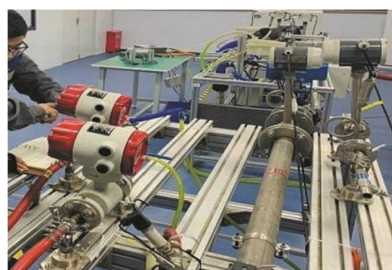
bearing test bench



rotor test bench



durability test bench

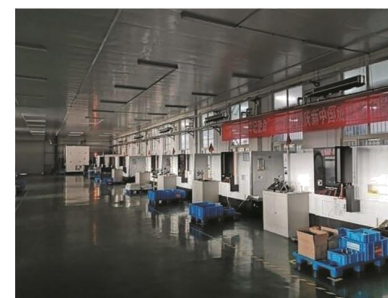


dynamic test bench



vibration test bench

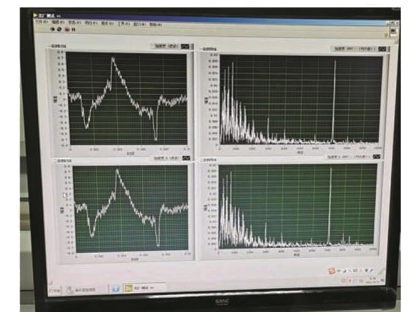
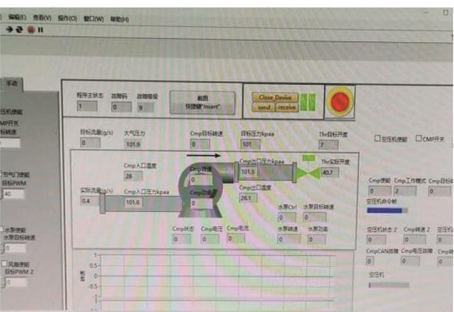
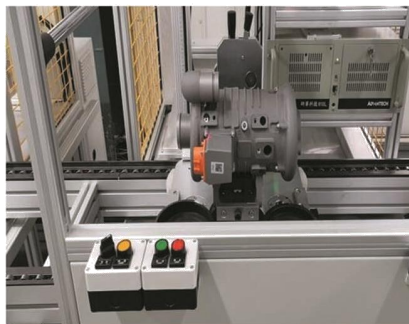
➔ SmarTurbo Production Line



➔ SmarTurbo Assembly



➔ SmarTurbo Test-Run



➔ SmarTurbo Core Technology

Turbo blower and turbo compressor is high speed centrifugal blower, which is specially designed and developed for water treatment and waste water treatment, shrimp farming and fish farming, air knife blower system and drying system, cement plant, power plant, oil and gas etc, it has been the the most efficient blower and compressor by saving 50% electricity bill more than traditional roots blower and compressor.



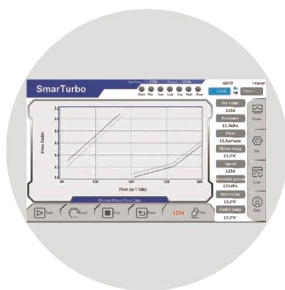
High Speed Impeller



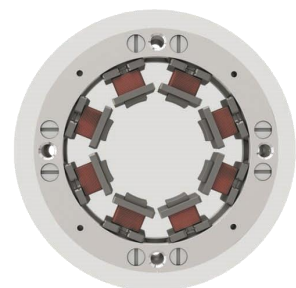
Turbo Blower Engine



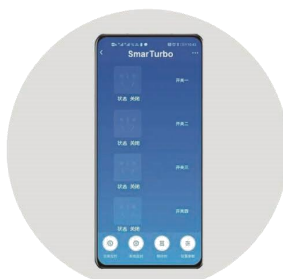
High Speed Motor



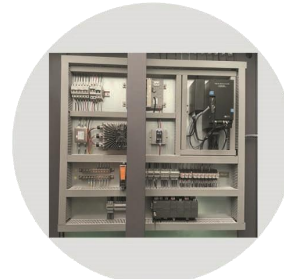
Touch Screen Control Panel



Magnetic Bearing



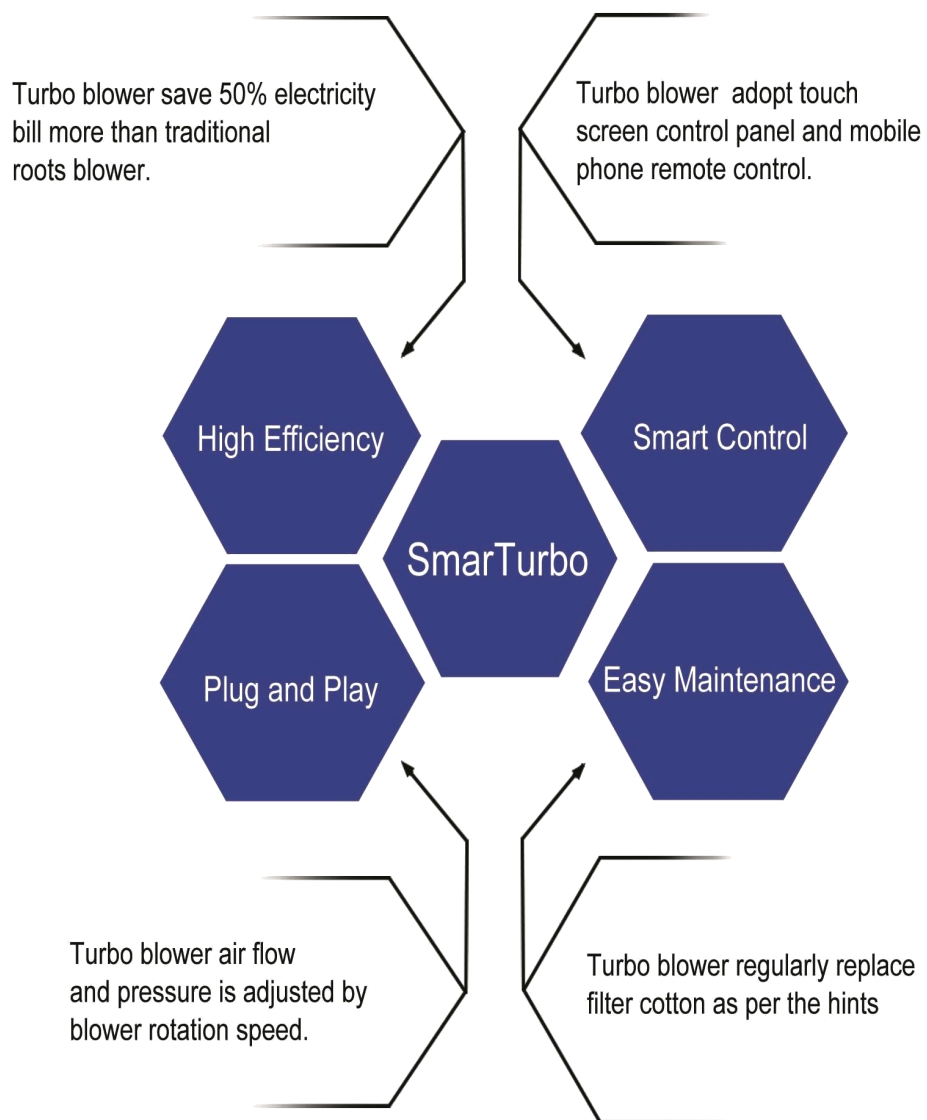
Mobile Phone Remote Control



Control System



SmarTurbo Advantage





SmarTurbo Turbo Blower

Model	37KW-40	37KW-80	55KW-80	75KW-40	75KW-80	90KW-80	110KW-40	110KW-80	110KW-120
Discharge Pressure kpa	Air Flow(m ³ /min), 20°C, Humidity60%, 1atm								
20	50	/	/	94	/	/	139	/	/
30	48	/	/	87	/	/	132	/	/
40	42	/	/	76	/	/	120	/	/
50	/	37	47	/	75	/	/	85	/
60	/	33	43	/	70	71	/	81	/
70	/	28	40	/	63	67	/	75	/
80	/	/	36	/	52	61	/	68	/
90	/	/	/	/	/	/	/	57	/
100	/	/	/	/	/	/	/	/	59
110	/	/	/	/	/	/	/	/	55
120	/	/	/	/	/	/	/	/	50
130	/	/	/	/	/	/	/	/	45
Model	150KW-40	150KW-80	150KW-120	220KW-40	220KW-80	220KW-120	300KW-80	300KW-120	350KW-100
Discharge Pressure kpa	Air Flow(m ³ /min), 20°C, Humidity60%, 1atm								
20	220	/	/	303	/	/	/	/	/
30	212	/	/	288	/	/	/	/	/
40	182	/	/	250	/	/	260	/	/
50	143	/	/	190	/	/	250	/	301
60	/	130	/	/	178	/	240	/	295
70	/	121	/	/	167	/	215	/	276
80	/	109	/	/	145	/	185	/	255
90	/	95	/	/	125	/	170	/	239
100	/	/	90	/	/	136	/	173	208
110	/	/	83	/	/	127	/	161	179
120	/	/	76	/	/	120	/	148	/
130	/	/	68	/	/	99	/	135	/



SmarTurbo Turbo Compressor

Model	Air Flow	Pressure	Power
	m3/min	bar(G)	KW
75KW-1.5	20-31	1.2-1.5	75
110KW-2	27-49	1.5-2.5	110
110KW-3	21-36	2.5-3.5	110
110KW-4	20-30	3-4	110
200KW-2	50-80	1.5-2.5	200
200KW-3	50-78	2-3	200
200KW-4	40-60	3-4	200
250KW-5	50-70	2-5	250
250KW-7	30-65	5-7	250
250KW-8	40-60	7-10	250
355KW-2	70-120	1.5-2.5	355
355KW-3	65-110	2.5-3.5	355
400KW-2	125-160	1.5-2.5	400
400KW-3	90-120	2.5-3.5	400

➔ SmarTurbo Application Field



Sewage Treatment Industry



Leather Manufacturing Industry



Petrochemical Industry



Pulp and Paper Industry



Thermoelectric Industry



Metallurgy Industry



Pharmaceutical Industry



Coal Chemical Industry



Textile Industry



Printing and Dyeing Industry

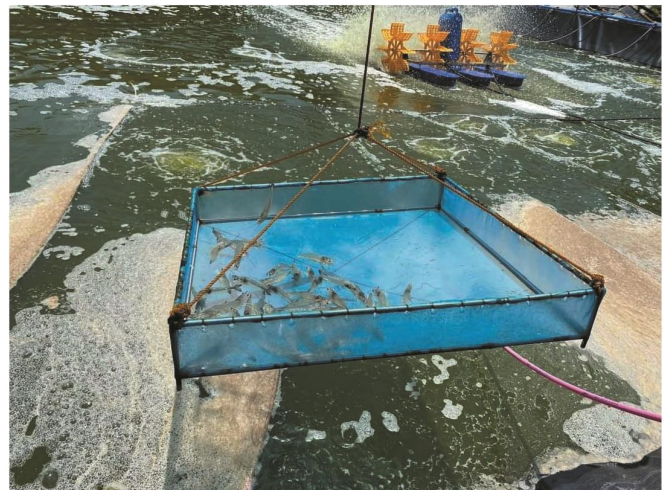
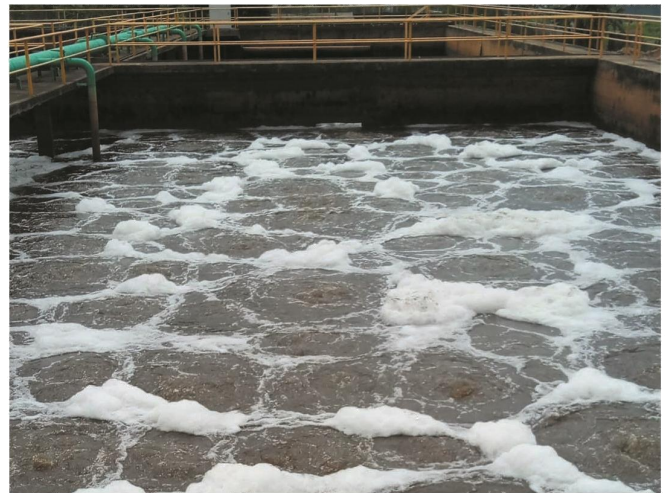


Food Industry



Cement Industry

➔ SmarTurbo Site Application



SmarTurbo | Turbo Blower

Qingdao SmarTurbo Blower Co., Ltd

Add: Suzhou Industrial Park, SuZhou City (near ShangHai city), China.

M: +8615621046960 (whatsapp/wechat)

Email: info@smarturbo.com.cn

Website: www.SmarTurbo.com.cn